

# Cast Steel Roll Specifications

## GRADE: SG Acicular Chill

**Union Electric Åkers**  
Forged and Cast Rolls



### DESCRIPTION

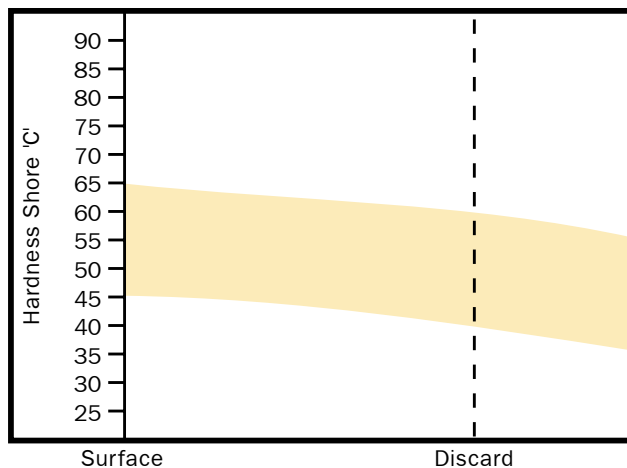
SG Acicular rolls are stronger and more wear resistant than SG Pearlitic Chill rolls and are capable of a higher hardness, especially in depth.

These enhanced properties are produced by increasing the alloy content - mainly nickel, chromium and molybdenum - which modifies the matrix structure from a pearlitic to an acicular form.

### APPLICATIONS

Product	Type of Mill	Position
Plate	2, 3 and 4 High	Roughing and Finishing
Wide Strip	2 and 4 High	Roughing
Sheet and Coil	2 High Skin Pass	
Medium Sections	2 and 3 High	Intermediate and Finishing

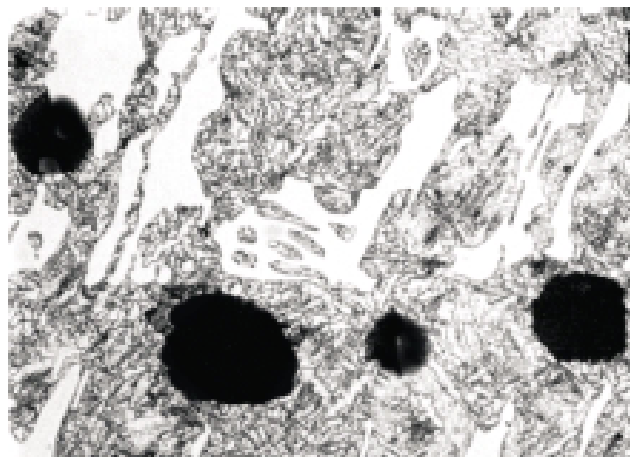
### DEPTH OF HARDNESS



### TYPICAL MECH. PROPERTIES

Property	N/mm <sup>2</sup>
Tensile Strength	475
Bending Strength	900

### MICROSTRUCTURE X500



### AIM CHEMISTRY (WT%)

Code	Leeb E	Shore C	C	Si	Mn	Ni	Cr	Mo
SGAC	640/670	58/63	3.2/3.6	1.0/1.8	0.4/0.9	2.5/3.5	0.1/0.6	0.4/1.0